

# Montclair Public Schools Academic Achievement Spring 2013

**Dr. Penny MacCormack**  
Superintendent of Schools

September 18, 2013

Montclair High School

# Montclair Public Schools' Mission

The Montclair Public School District is dedicated to creating a culture of learning and continuous improvement that provides every child with a high quality, rich and rigorous education, through a magnet system of integrated schools in which every school represents a strong, diverse and vibrant community of learners.

# Montclair Public Schools' Vision

The Montclair Public Schools will cultivate and support our students to become high academic achievers, curious and creative thinkers, and socially adept young people who are prepared for college and careers of the 21st century.

# Core Beliefs

- Challenging all students by providing academic rigor is essential to student success.
- All children, regardless of circumstances, can achieve at high levels.
- Effective principals and teachers are key to improving growth in student achievement. In addition, the Board of Education and Central Services must promote an environment of continuous improvement and innovation that results in a high performing district that is 100% focused on student achievement and success.
- Supportive and engaged parents, guardians and members of our diverse community must be welcomed as active participants in the education of our students.

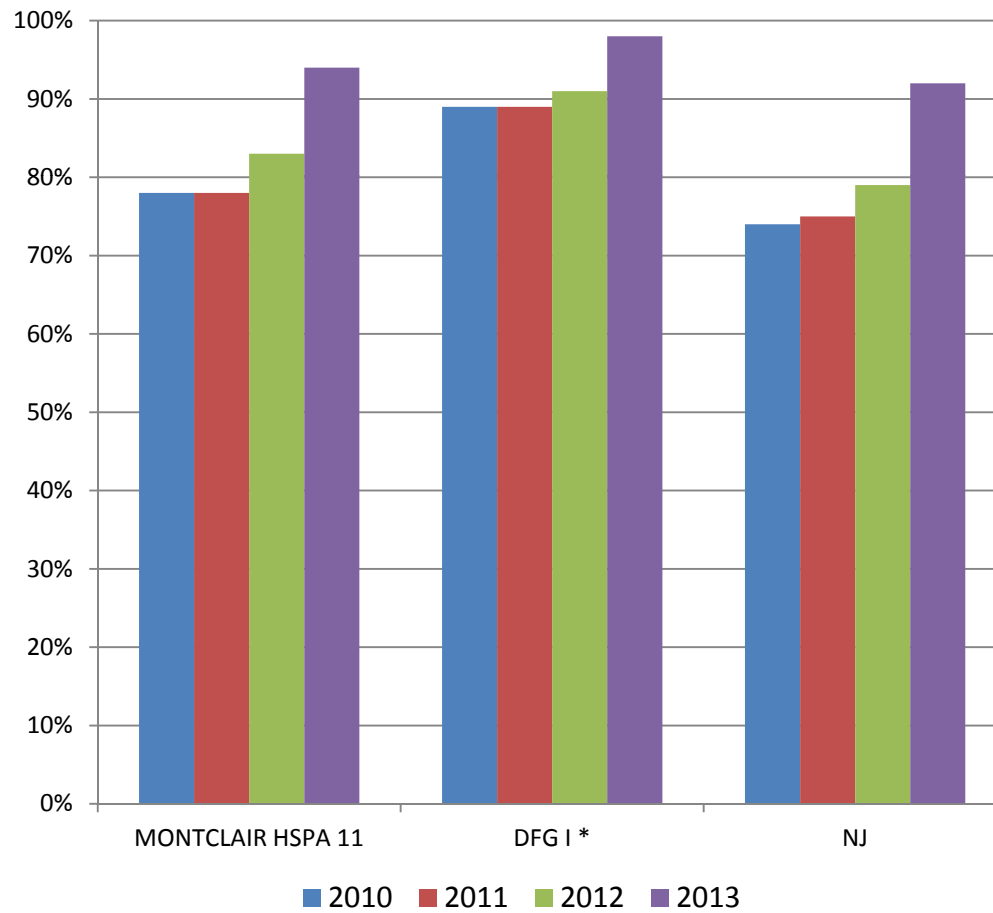
# Montclair Board of Education Goals

1. High Expectations and Achievement for All
2. Consistent and Rigorous Instruction Across All Classrooms
3. Highly Effective Central Services Support to Schools
4. Effective Internal and External Communications and Parent Engagement
5. Effective and Accountable Leadership at the School and District Levels
6. Equitable Resources/School Offerings
7. Focus/Attention on Montclair High School

# NJ HSPA LAL

## PROFICIENT + ADVANCED PROFICIENT

### GRADE 11

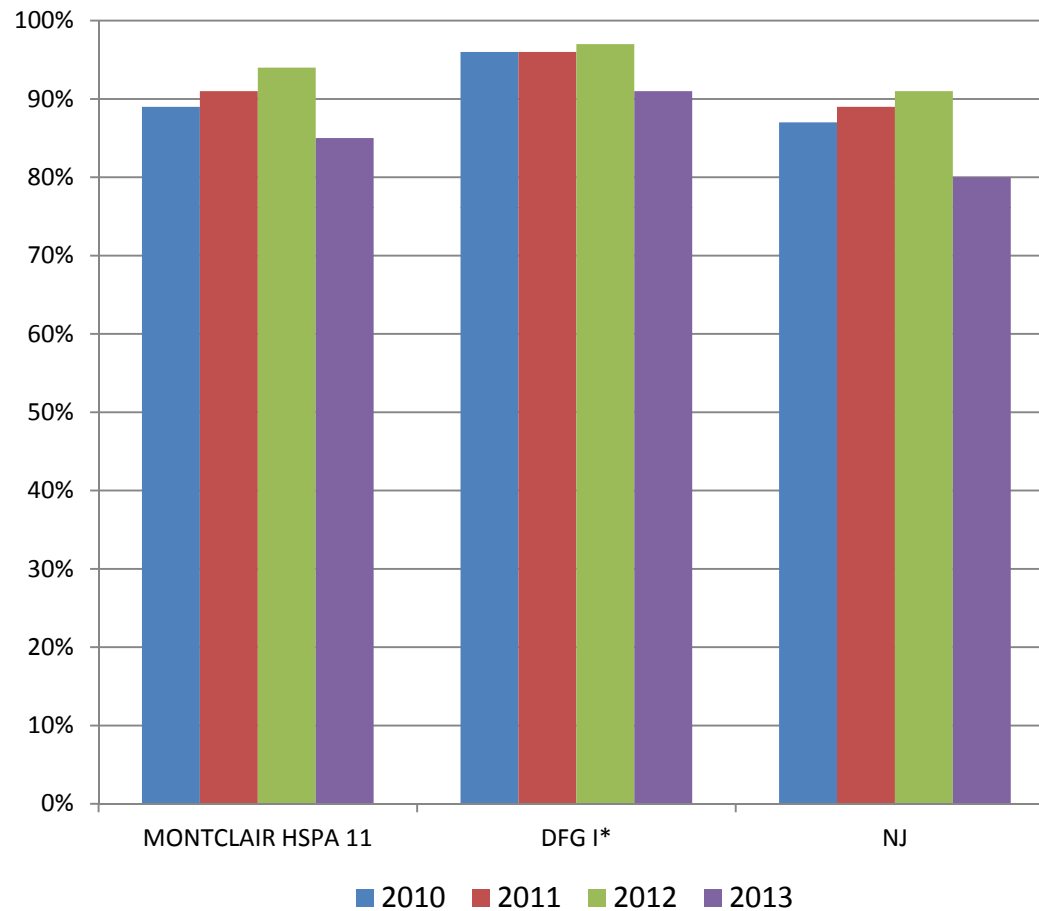


\* District Factor Group "1"

# NJ HSPA MATH

## PROFICIENT + ADVANCED PROFICIENT

### GRADE 11

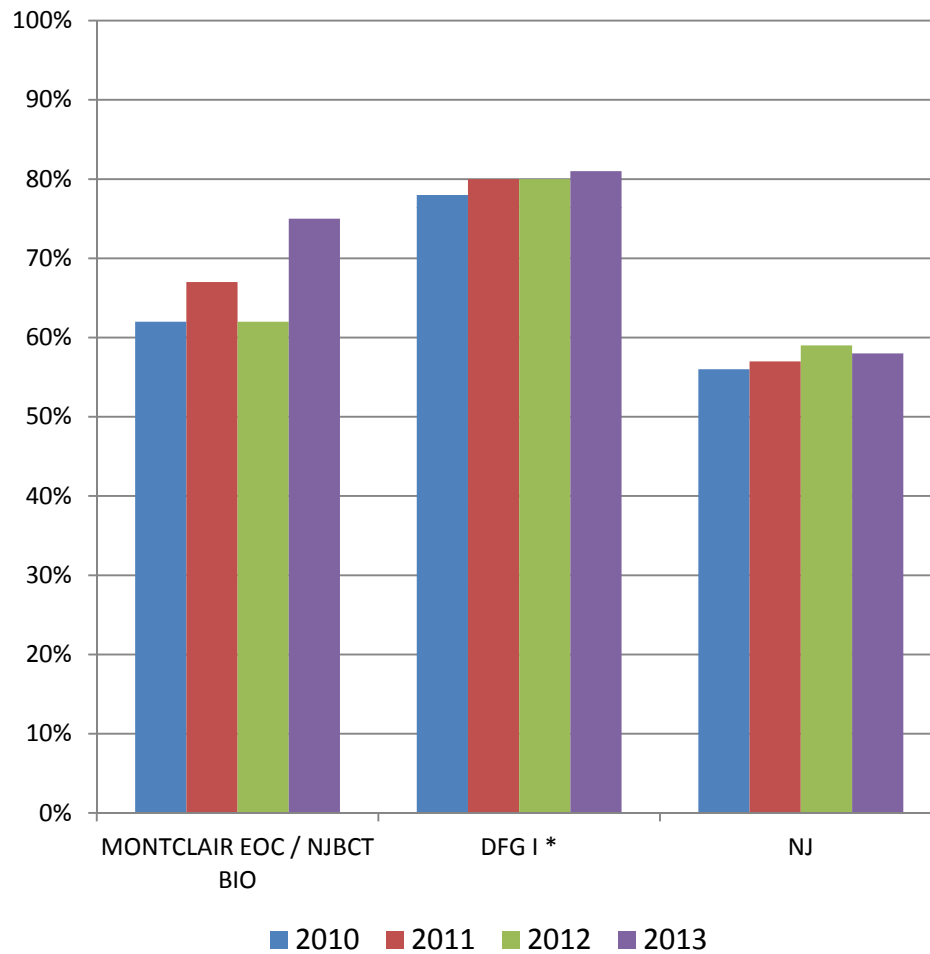


\* District Factor Group "1"

# NJ EOC / NJBCT BIOLOGY

## PROFICIENT + ADVANCED PROFICIENT

GRADE 9

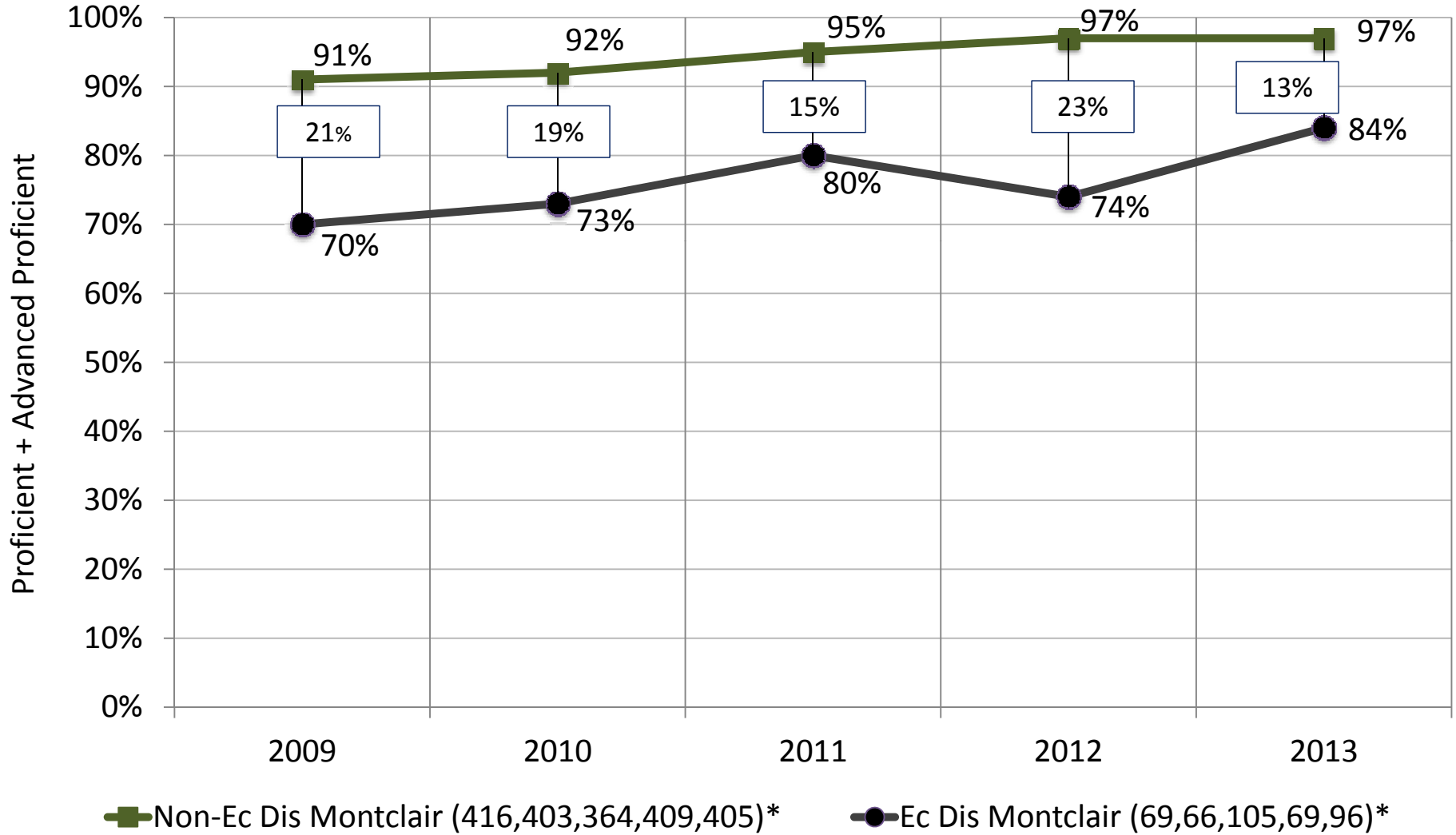


\* District Factor Group "1"



# NON-EC DIS / EC DIS: 2009-13

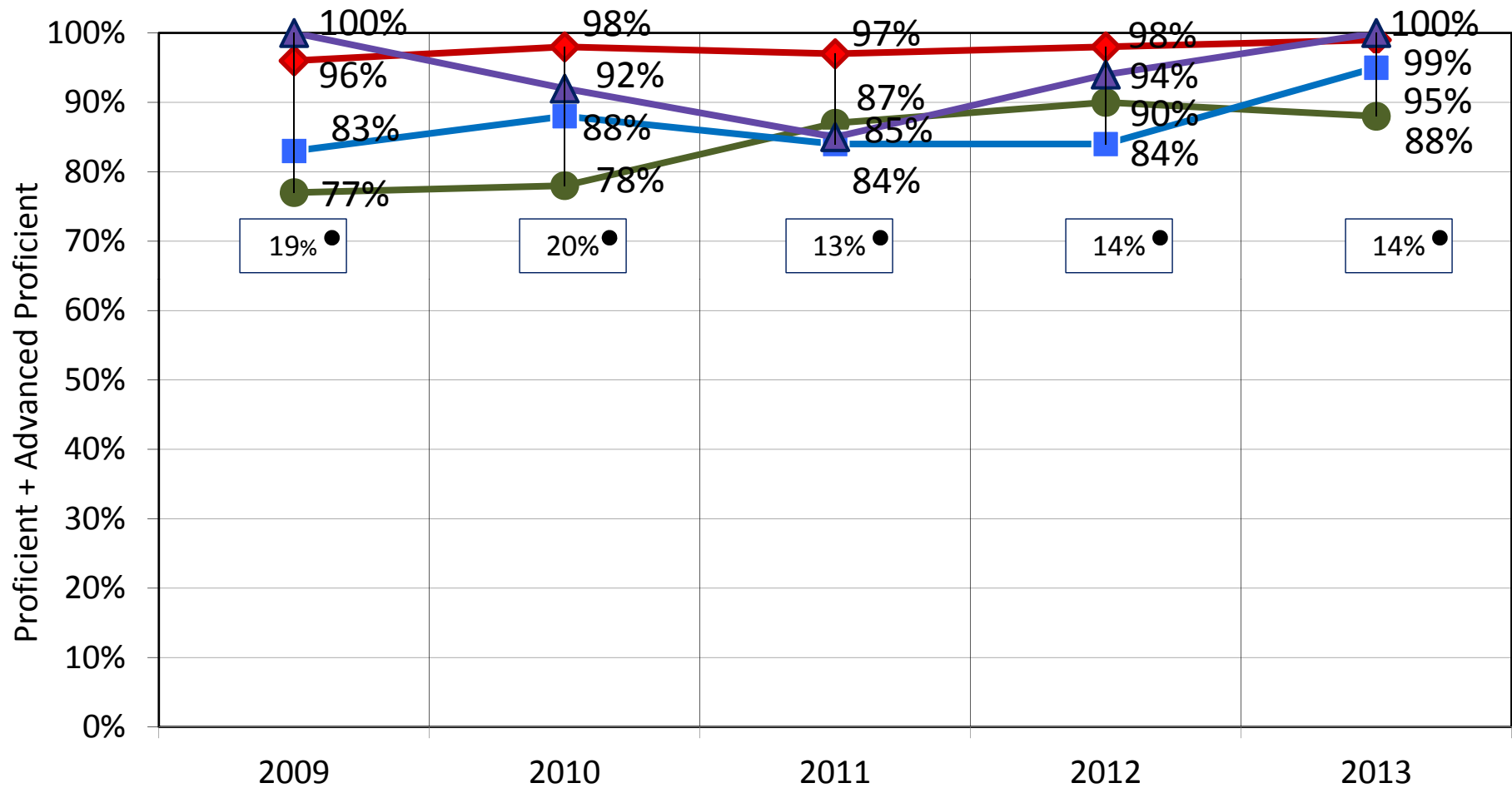
## NJ HSPA 11 LAL Prof/AdvProf



\* No. of Valid Scores by year

# ETHNICITY: 2009-13

## NJ HSPA 11 LAL Prof/AdvProf



◆ White Montclair (238,242,225,259,237)\*  
■ Hispanic Montclair (30,25,32,30,39)\*

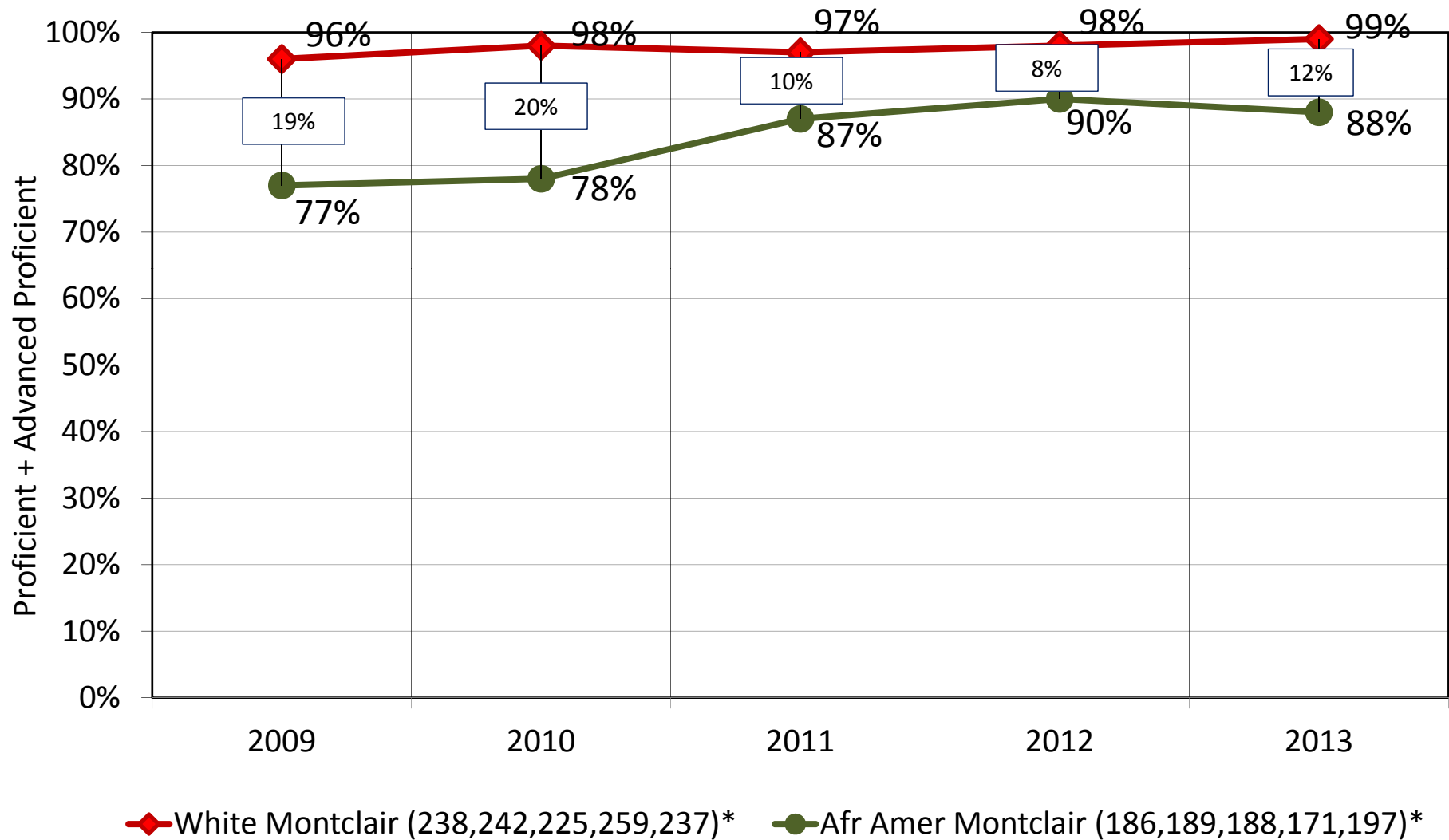
● Afr Amer Montclair (186,189,188,171,197)\*  
▲ Asian Montclair (27,12,20,17,28)\*

W/AA Gap ●

\* No. of Valid Scores by year

# W / AA: 2009-13

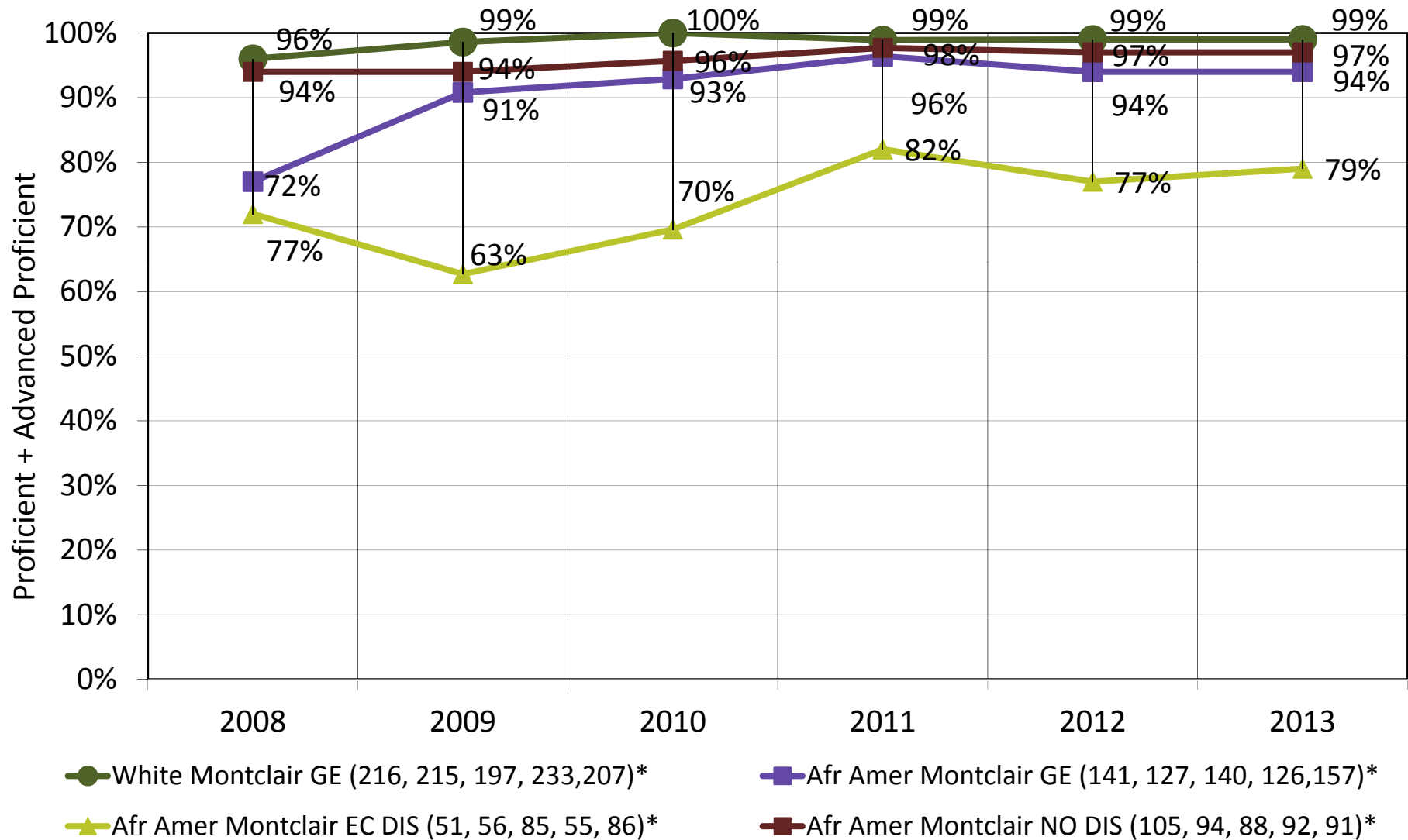
## NJ HSPA 11 LAL Prof/AdvProf



\* No. of Valid Scores by year

# W / AA: 2009-13

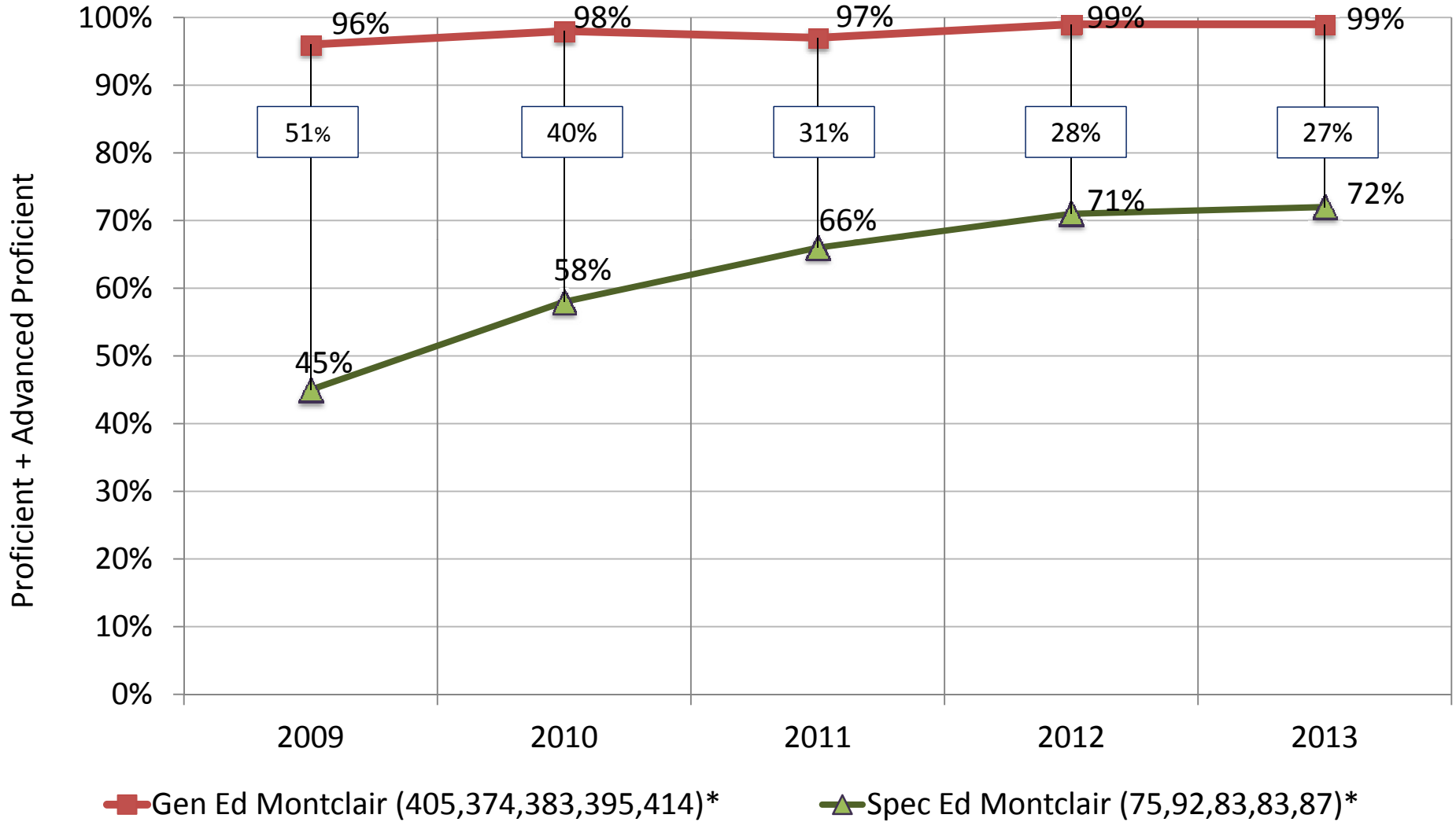
## NJ HSPA 11 LAL Prof/AdvProf



\* No. of Valid Scores by year

# GENERAL /SPECIAL EDUCATION: 2009-13

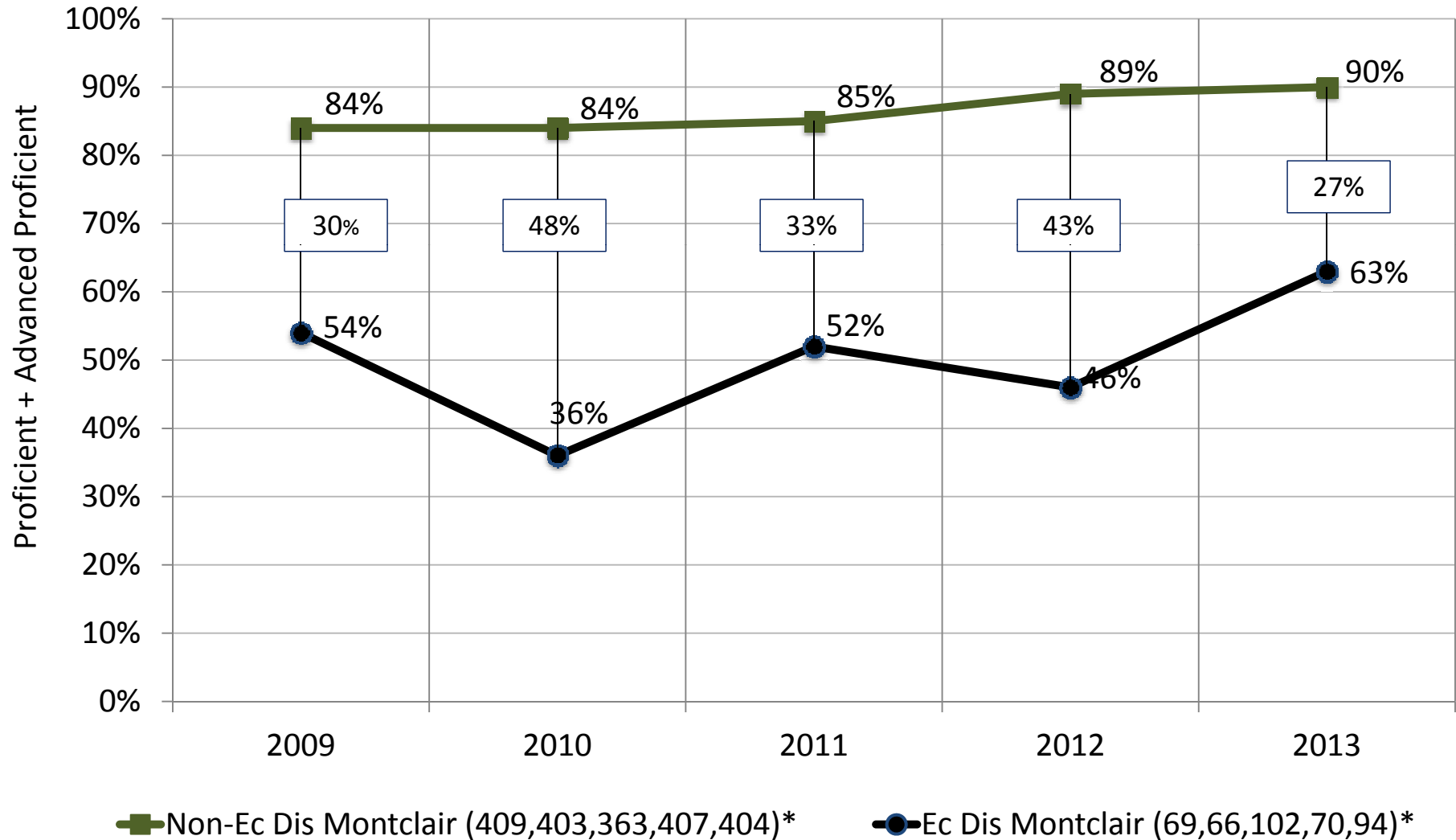
## NJ HSPA 11 LAL Prof/AdvProf



\* No. of Valid Scores by year

# NON-EC DIS / EC DIS: 2009-13

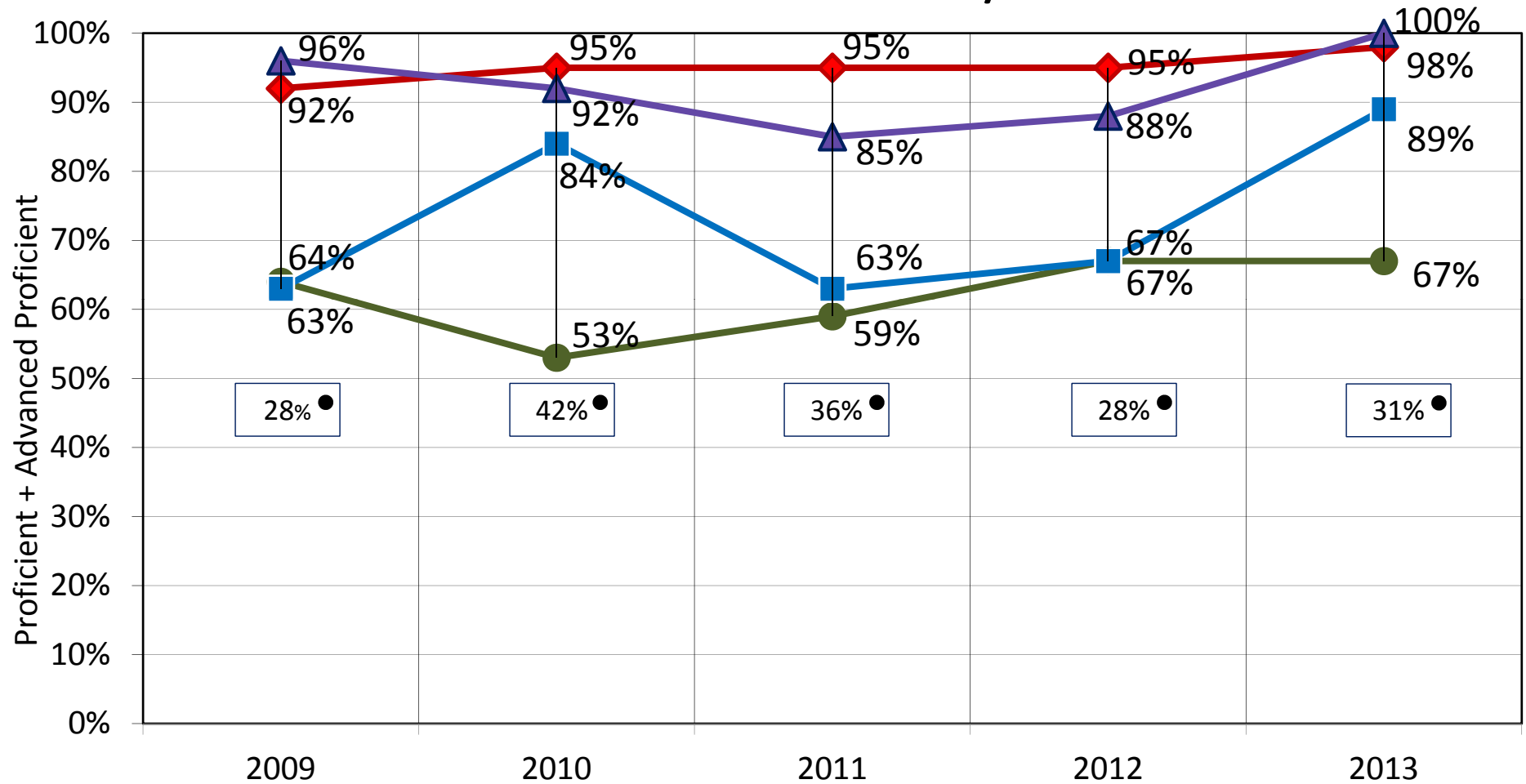
## NJ HSPA 11 MATH Prof/AdvProf



\* No. of Valid Scores by year

# ETHNICITY: 2009-13

## NJ HSPA 11 MATH Prof/AdvProf



◆ White Montclair (243,225,258,236)\*

■ Hispanic Montclair (25,32,30,38)\*

● Afr Amer Montclair (188,184,172,196)\*

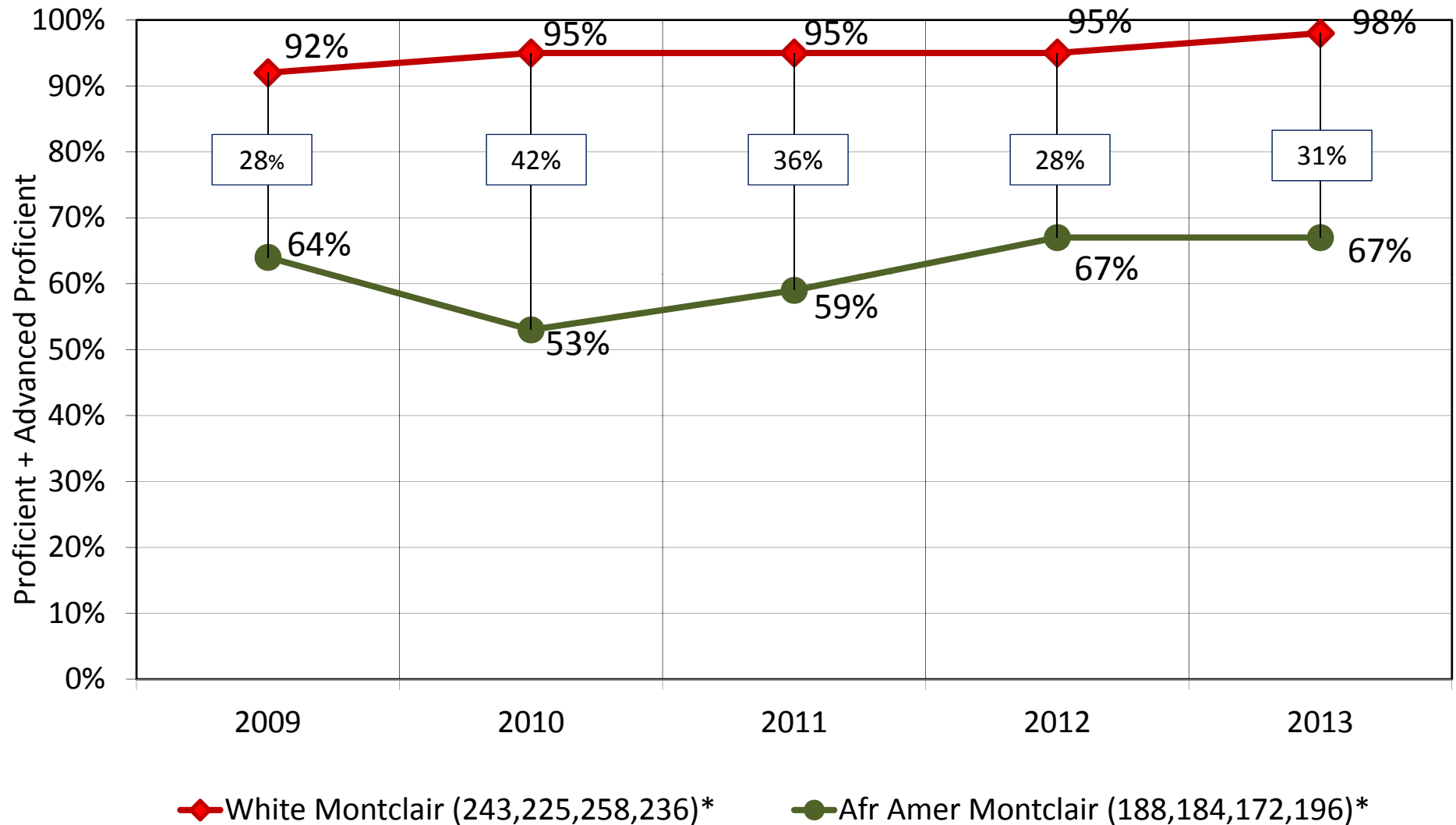
▲ Asian Montclair (27,12,20,17,28)\*

W/AA Gap ●

\* No. of Valid Scores by year

# W / AA: 2009-13

## NJ HSPA 11 MATH Prof/AdvProf

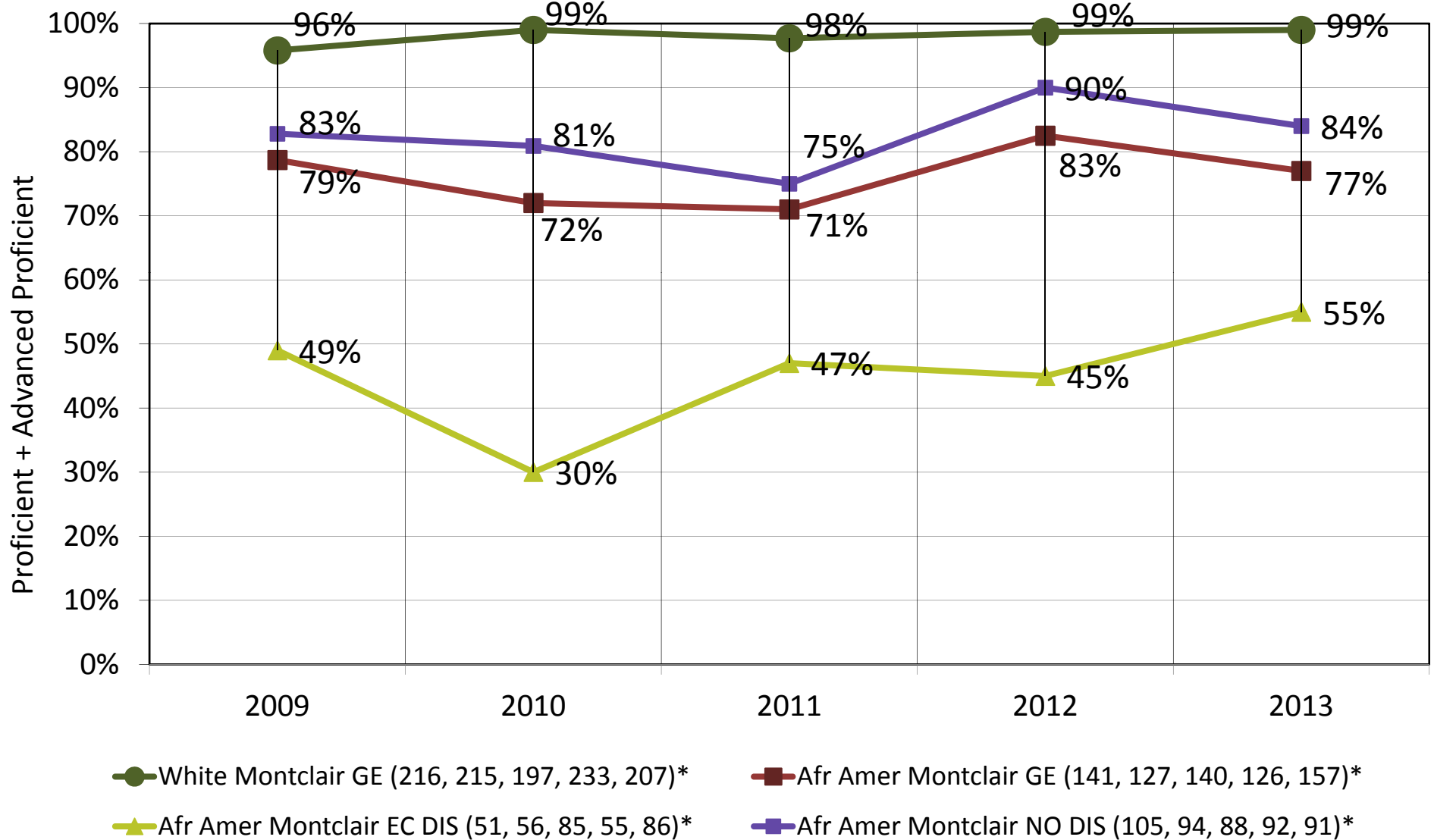


\* No. of Valid Scores by year



# W / AA: 2009-13

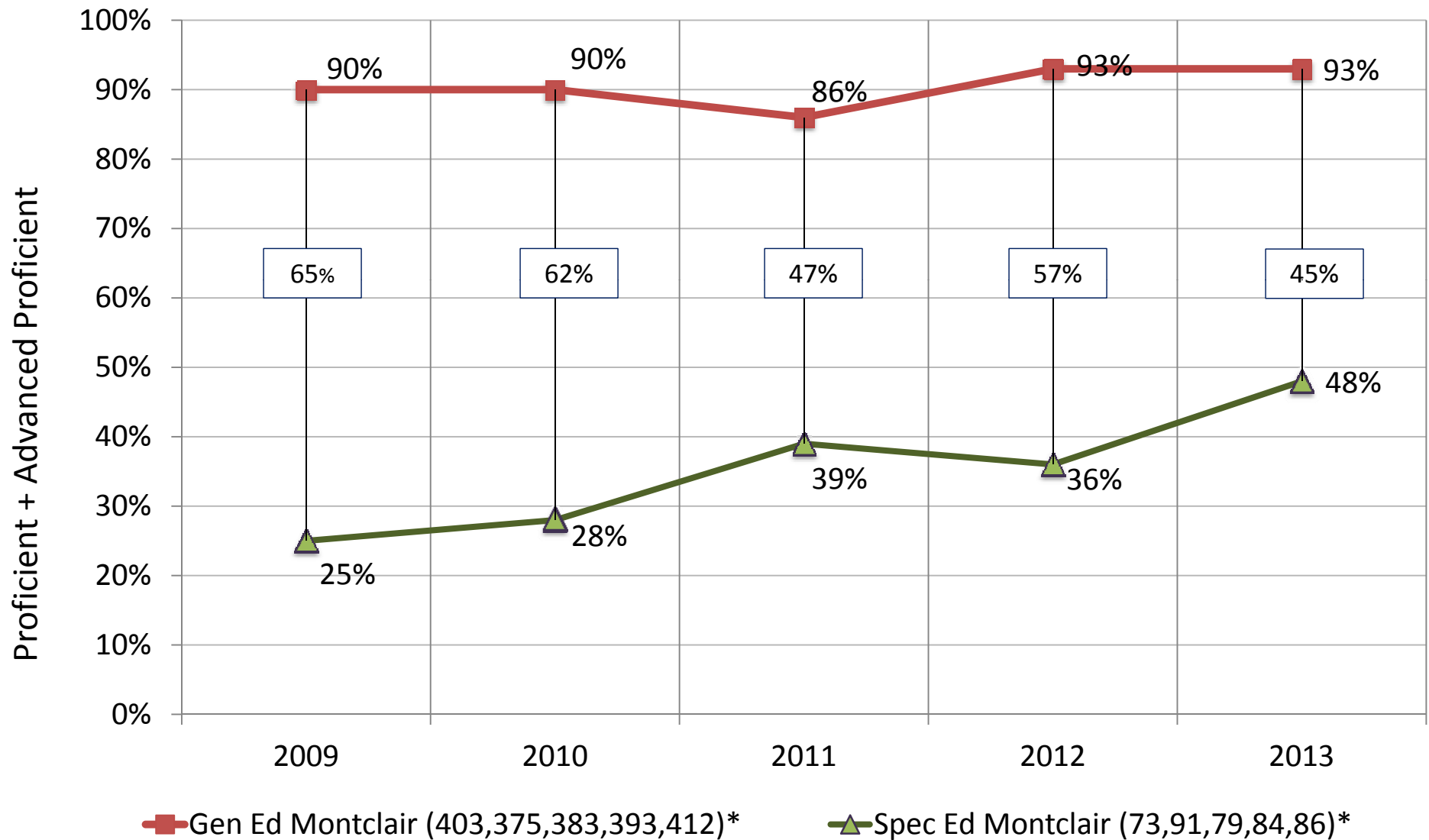
## NJ HSPA 11 MATH Prof/AdvProf



\* No. of Valid Scores by year

# GENERAL /SPECIAL EDUCATION 2009-13

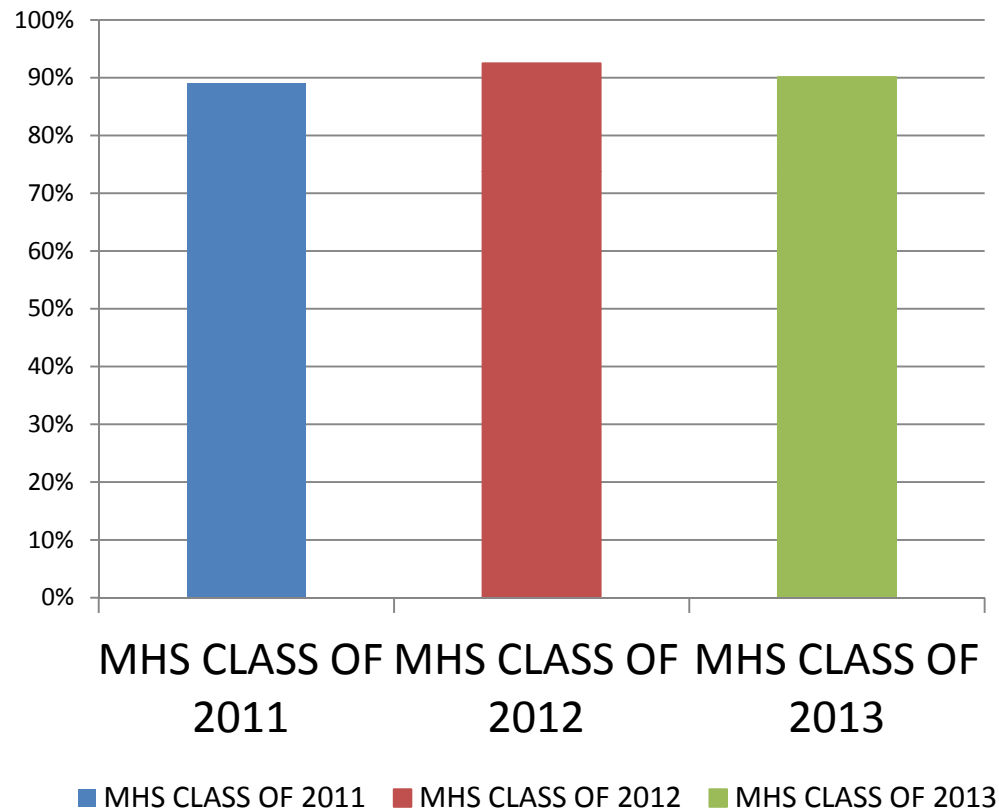
## NJ HSPA 11 MATH Prof/AdvProf



\* No. of Valid Scores by year

# MONTCLAIR HIGH SCHOOL GRADUATION RATE

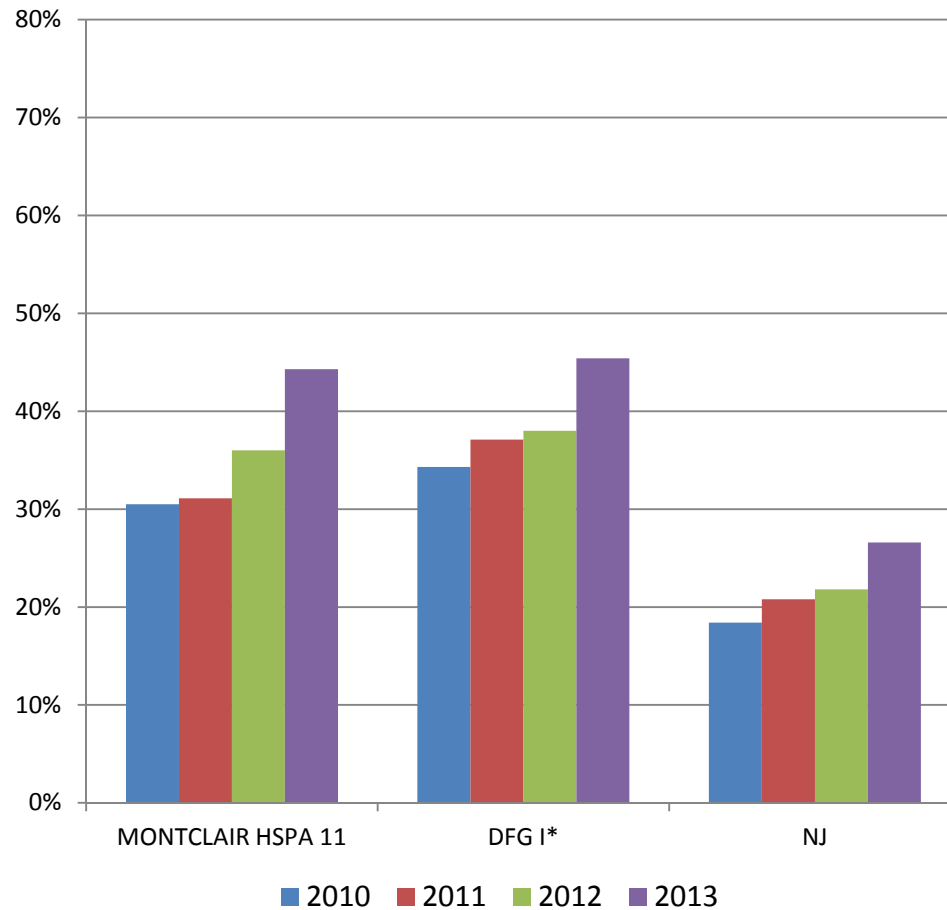
## MHS Graduation Rates



# APPENDIX

# NJ HSPA LAL ADVANCED PROFICIENT

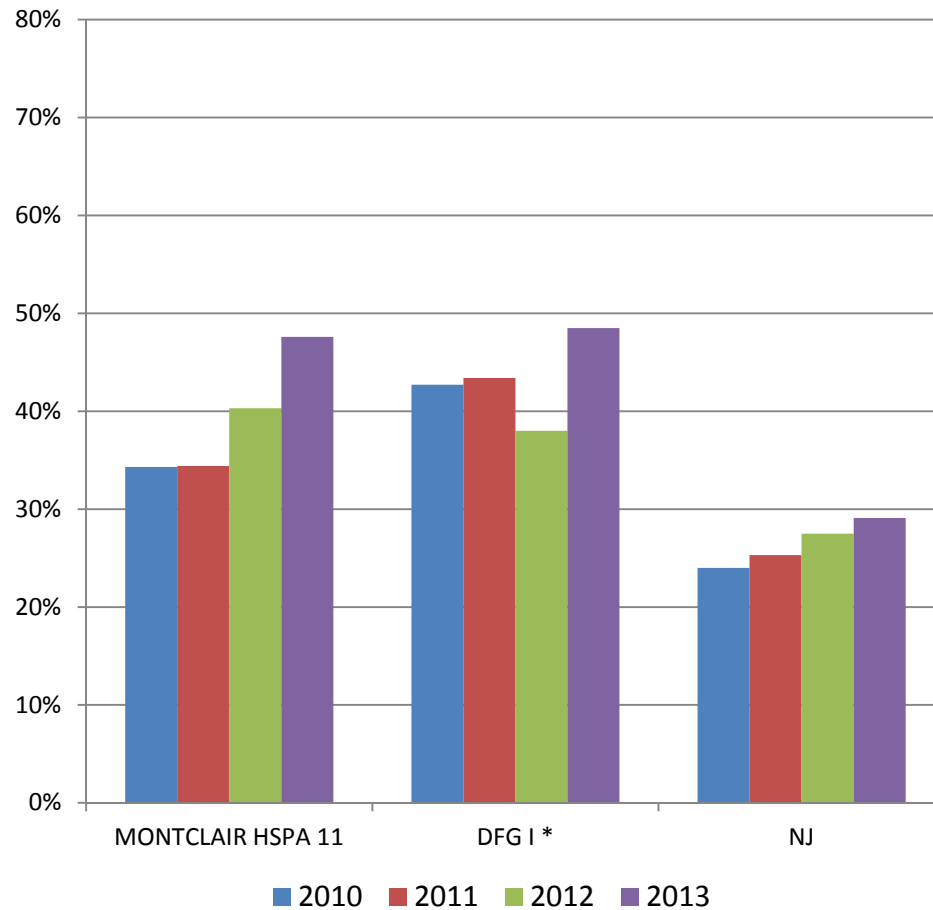
## GRADE 11



\* District Factor Group "1"

# NJ HSPA MATH ADVANCED PROFICIENT

## GRADE 11

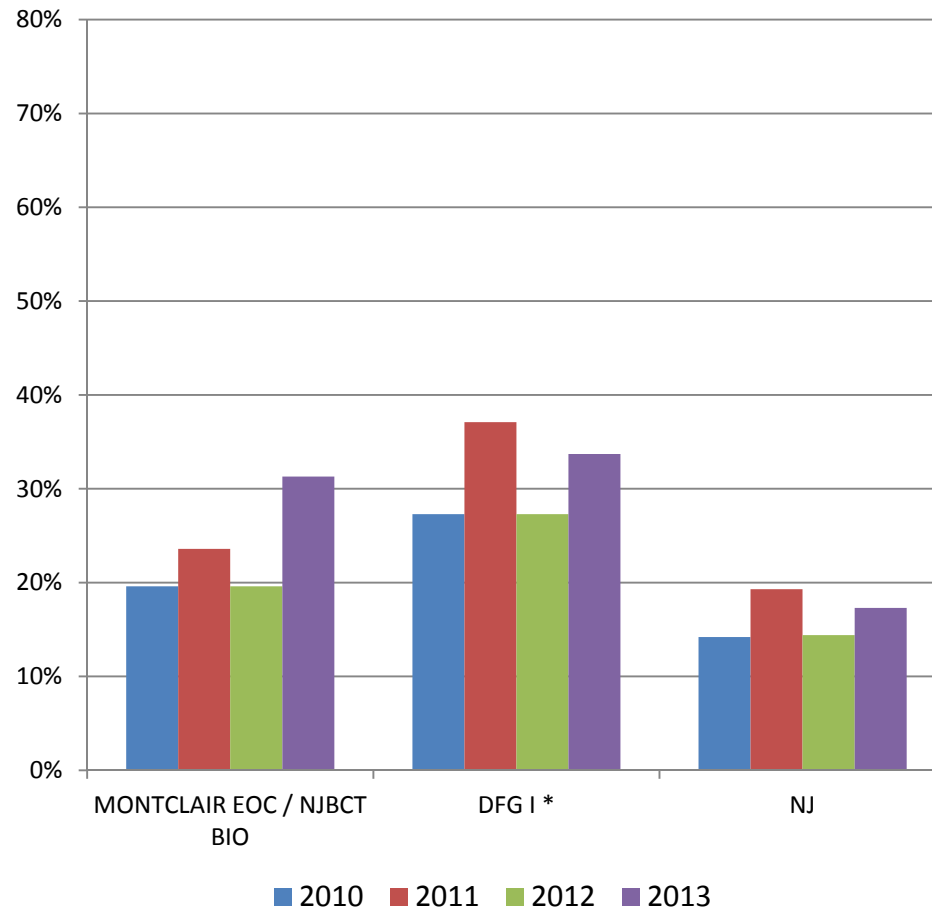


\* District Factor Group "1"

# NJ EOC / NJBCT BIOLOGY

## ADVANCED PROFICIENT

### GRADE 9



\* District Factor Group "1"